

Rotating cleaning nozzle PTFE Whirly Series 573/583



Features:

- Entirely made of PTFE
- 3-A-compliant slip-on connection
- Suitable for corrosive environments
- Suitable for particularly high hygiene requirements (e.g. milk industry)



Function video
www.lechler.com/de-en/medialibrary/videos-general-industry
 Or scan the QR code.

Series 573/583

Technical data:



Maximum operating temperature
95 °C



Maximum ambient temperature
200 °C



Installation
Operation in every installation position



Bearing
Slide bearing made of PTFE



Material
PTFE



Weight
140–300 g



Surface quality
Ra ≤ 0.8 µm
OUTSIDE



Surface quality
Ra ≤ 0.8 µm
INSIDE



Steam suitability
Not suitable



Insertion diameter
49.0–78.4 mm



Recommended filter
Line strainer with a mesh size of 0.3 mm/50 mesh

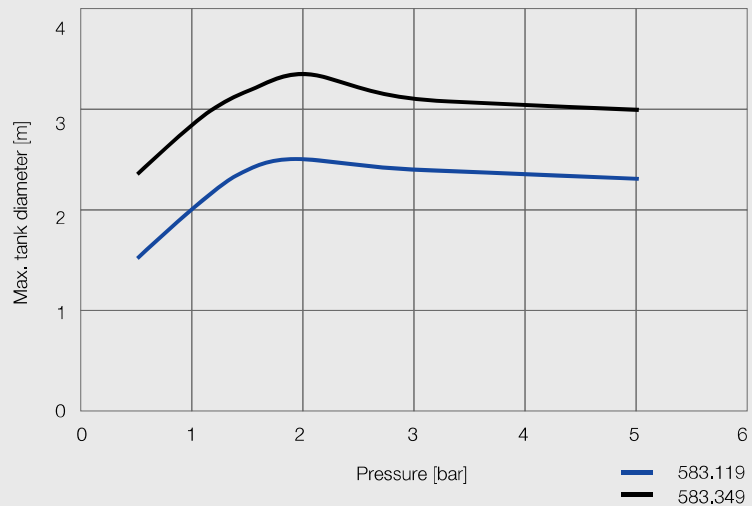


Recommended operating pressure
2 bar



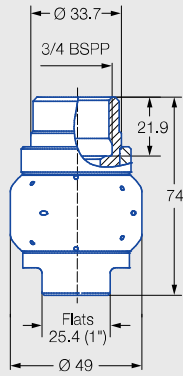
Max. tank diameter

The specified maximum tank diameter applies to the recommended operating pressure and is indicative only. The type of soiling is also decisive for the cleaning result.

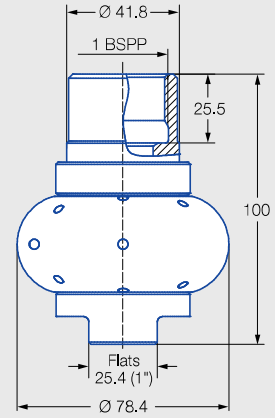


Overview of maximum tank diameter depending on pressure

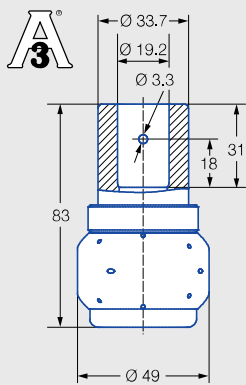
Dimensions in mm
(unless stated otherwise).



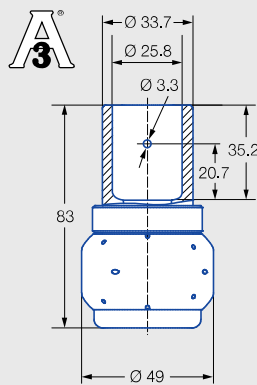
Female thread



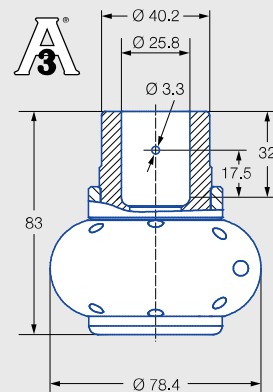
Female thread



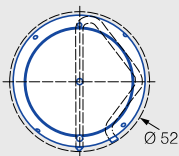
3/4" slip-on connection
(3-A-compliant)
Dimensions of slip-on connection
according to ASME-BPE (OD tube)



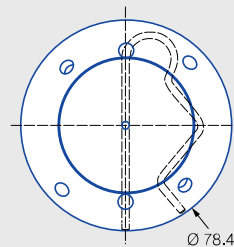
1" slip-on connection pin 1
(3-A-compliant)
Dimensions of slip-on connection
according to ASME-BPE (OD tube)



1" slip-on connection pin 2
(3-A-compliant)
Dimensions of slip-on connection
according to ASME-BPE (OD tube)






Insertion diameter of
slip-on connection according
to ASME-BPE (OD tube)



Insertion diameter of
slip-on connection according
to ASME-BPE (OD tube)





Spray angle	Ordering no.					Narrowest cross-section \varnothing [mm]	\dot{V} water [l/min]			\dot{V} water at 2 bar [m ³ /h]	Pin	Max. tank diameter [m]
	Type	Connection					p [bar] (p _{max} = 6 bar)					
		3/4 BSPP	1 BSPP	3/4" slip-on connection	1" slip-on connection		1.0	2.0	3.0			
270° 	583.116.55	AL		TF07		2.4	47	67	82	4.0	1	2.5
	583.346.55				TF10	5.9	159	225	276	13.5	2	3.2
270° 	573.116.55	AL		TF07		2.4	47	67	82	4.0	1	2.5
360° 	583.119.55	AL		TF07	TF10	1.8	41	58	71	3.5	1	2.4
	583.209.55	AL		TF07	TF10	3.5	71	100	122	6.0	1	2.5
	583.269.55	AL		TF07		4.8	103	145	178	8.7	1	2.8
	583.279.55		AN		TF10	3.7	106	150	184	9.0	2	3.0
	583.349.55		AN		TF10	5.6	159	225	276	13.5	2	3.2

NPT threads on request.

Information on operation

Compressed air can be used only for a short time for blowing dry. Use above the recommended pressure will have a negative effect on the cleaning result and wear.

Information on slip-on connection

- Cotter pin made of stainless steel 1.4401 (316) included (ordering no. for pin 1: 095.013.17.06.60, pin 2: 095.013.17.06.61).
- Depending on the adapter diameter, the flow rate may increase due to the leakage between the adapter and rotating cleaning nozzle.

Ordering Type + Connection = Ordering no.
example: 583.116.55 + AL = 583.116.55.AL